



**VISIONZ**
Of A Restaurant

Downlights



Discretion doesn't have to mean anonymity. Omega Pro combines style with power. Its vast collection of options allows it to fully integrate with the architecture and offers full control of the lighting effects. Combined with the Casambi™ system, each light output can be controlled separately. A solution adapted to the needs of modern architecture.

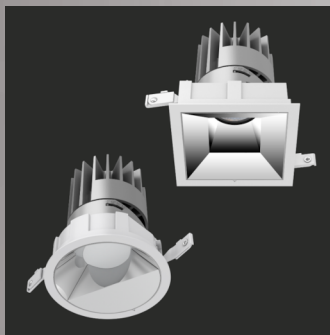
LumenTruss - Omega Pro

The 200 Series recessed LED downlight for NEW CONSTRUCTION or REMODEL applications delivers performance, flexibility, and value. Available options include: 200-HD Adjustable Accent and Adjustable Wall Wash, 201/201-RM Fixed, 202/202-RM Adjustable Accent, and 203/203-RM Wall Wash. Multiple static white and warm dim color temperature, optic, and integral or remote driver options provide ultimate flexibility. Architectural quality flanged and flangeless trim options in round and square feature minimal 1-7/8", 2-1/4", and 2-3/4" apertures. Four designer finish options fit all types of ceiling environments



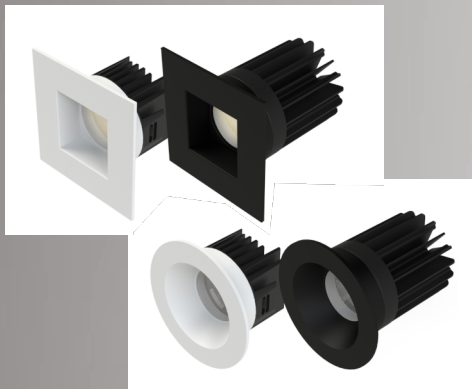
Number 8 Lighting - 200 Series

Our ultra-miniature led downlight system is the perfect combination of lens and reflector. Rinata focuses on clean design, premium performance, precise angle alignment, superior glare control, and ease of installation. Offered in downlight and linear options with the ability to customize through our numerous accessories from shape and trim to beam spread and secondary reflector colors.



PMC - Rinata

A highly efficient, high-output LED lighting solution for 10-20 ft ceiling applications. Featuring over 300 combinations of light engines, CCT options, beam angles, paintable trim and dimming capabilities, the LGD Series is perfect for achieving consistent lighting throughout projects with varying ceiling heights.



Visionz - LGD

Pendants

Varied colors, transparency and continuously changing shapes – the characteristic features of soap bubbles– inspired this BOMMA collection. When lighted, the metallic sheen of its surface transforms to iridescent and translucent, exposing its crystal character. The entire collection is produced using the technique of hand-blowing without a form. The seemingly perfect droplet of molten glass is given a unique shape as well as a unique color spectrum. The Soap Mini collection allows unlimited space for your creativity, with the option to create as large groups of crystal drops as you fancy – from smaller compositions to expansive light constellations.

Bomma - Soap Mini



BOMMA's meticulously crafted leather and horsehair surrounding firmly embraces its hand-blown crystal elements. This unconventional romantic bond celebrates a world of contradictions and the permanent essence of glass. The original design of this collection combines two absolutely precise crafts – perfect leather processing and traditional glassmaking. While the object encased in black leather provokes with its strong bondage aesthetic, the natural-brown version at once highlights both the solidity and fragility of glass. Tied-Up Romance transcends the meaning of lighting to yet another level.

Bomma - Tied-Up Romance



Try all three Smart designs, Kup, Lotis and Cake with the lovely shape of Smart Tube Suspended. Combine a white or black structure cylinder, with designs in black and white structure, or gold finish.

Modular - Smart Tube



Mix and match your favorite combination of five different shapes and trendy color range to create something that fits your wishes like a glove. Finest materials, green technologies, and sophisticated production reflect in top-notch design and give this decorative element a chance to create an ambient of your dreams.

Intra Lighting - Zoe



Pendants



Random is created to enhance the look of modern open ceilings, turning them into something dynamic! And it all starts with using straight lines and bringing them together into a composition that works best for open spaces that need a secondary ceiling.

Intra Lighting - Random



Linear lighting has been a mainstay in the design community for over a decade with very little improvements. The options have been recessed or pendant, uplight or downlight. Aside from LED technology advancements, these have really been the only options to consider. Well, we think that's boring.

PMC Lighting - ARCX



Whether you are operating a new independent dining concept, a multi-unit operation, or an established Michelin Star restaurant, lighting is the secret ingredient to delight your customers. Lighting will transform your restaurant to create a memorable dining experience! Archistoric has produced lighting for some of the most innovative players in the food and drink space, from single-store operations to fast-growing chains. So if you're designing, constructing, or renovating a dining space, let Archistoric get the lights!

Archistoric - Custom Woven Pendant



BRIGIT is a suspended luminaire with a unique personality. Combining the downlight with a colored shade producing ambient light in your choice of three color options, BRIGIT is an ideal fixture to highlight any interior design space with its presence.

JokerLight - Brigit

Linear

Offering lighting without hot spots at a 45-degree angle from a corner, this series excels at maximizing appeal of the products in POP stands, while maintaining a minimalist style. This profile includes a long lens fitting system to maximize its long term durability. With a type A mounting channel in the back, you can easily join multiple sections with a type A straight joiner or use it to pass and hide the wiring behind the profile.

LumenTruss - 2400

This profile is the thinnest of the 1000 series being only 6mm thick and 18.7mm wide and is compatible with most of our LED strips. Perfect for tight spots, it will be very discreet and will stand out.

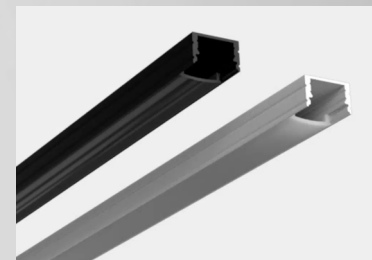
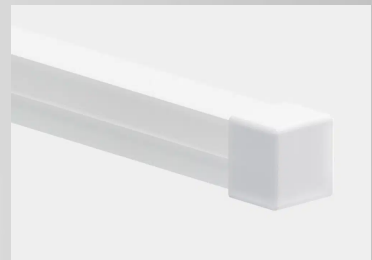
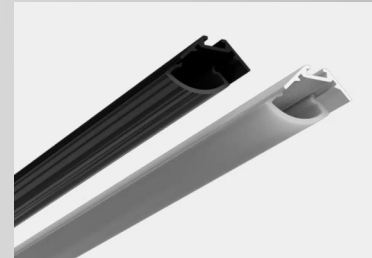
LumenTruss - 1100

Forget about rigid structures! Introducing Neon Flex from LumenTruss™, an ultra Flex sheath that can accommodate a LED strip and replace both the LED profile and lens! Made of flexible silicone, Neon Flex lets light through and provides continuous and uniform linear lighting. It is a bold and spectacular lighting concept that follows the contours of objects or elements of your décor, brings out the light through walls and ceilings or, in suspension, in all directions: the creative possibilities are endless!

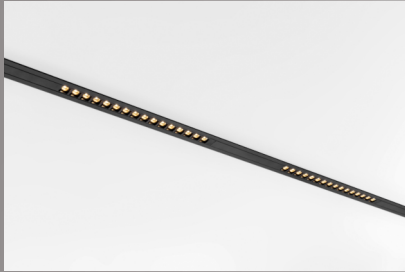
LumenTruss - Neon 3D Flex

Lighting without hot spots! Here is a profile designed to ensure that the LED source is invisible, offering uniform and soft lighting for the eyes. A compact and versatile luminaire!

LumenTruss - 1200



Track / Ceiling



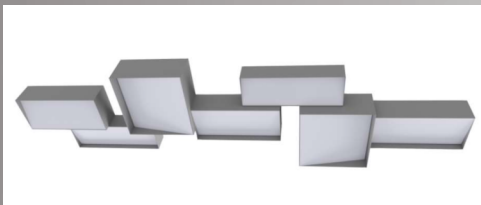
A very thin magnetic track rail, Pista Track 48V Recessed brings together miniaturization and personalisation. A slender line with trim on the ceiling or wall. Play with different modules on single or multiple track rails in different lengths and colors, spots, pendant lights and more!

Modular - Pista Track Recessed



Elegant and powerful, the TRAXX track light system from LumenTruss™ enhances the decorative elements or products you want to highlight. With its interchangeable heads providing three projection angles and a choice of three color temperatures, this track-mounted spotlight is ideal for high-end applications. Its modular design, removable and tool-free, makes it an exceptionally versatile LED spotlight.

LumenTruss - Traxx



This is a custom feature fixture with flexibility, to be conformed to many applications. Private dining spaces, main ceiling features, etc.

PMC Lighting - Silea 2208



Challenge its small size and put it in lighting compositions that follow the architecture, use it to give people guidance or draw attention to what needs to be seen. And if it's not enough exciting already, creating a unique lighting system using Nola can be even more fun if you pair it with its bigger sister Lona and get an elegant detail that highlights the important part of the architecture, or combine it with linear luminaires to create a discrete guidance through space. It's a luminaire that can easily catch the rhythm of your architecture, enriching it with excitement, and making every heart skip a beat.

Intra Lighting - Nola C

Wall Sconce / Pin light

With their indirect lighting and subtle shadow effects, wall fixtures are undoubtedly atmosphere creators. Trapz, our organic interpretation inspired by a trapezium, is no different. The flattened cylinder has been finished with two oblique openings, which allow you to see the contrasting interior of the luminaire and immediately create an unusual chiaroscuro effect. A new, optional diffuser hiding the light source softens and levels the light, and gives the light beam a more uniform glow.

Modular - Trapz Wall

The Lumux L series combines architectural design and quality with high performance, and features a range of vandal resistant, wall and ceiling mounted luminaires with a variety of grill and visor options. Designed for accent lighting of walls and facades, the Lumux L series is constructed from the highest quality components and is built for optimal performance in any environment while offering elegant and attractive form factors.

Lumux - L100

With minimalism at its core, Lgn is an interior step light collection that seamlessly meshes with its surroundings. Available in four unique shapes, Lgn is a pre-formed GRG fixture that easily-installs into a building's frame for a flawless trimless look, without the need to cut holes and reducing costs associated with intensive labor.

Vanilla - Square Steplight

Like the flower that opens up and welcomes you in, Smart Lotus Recessed brings charm to your space with a simple and elegant design. One of the three Smart designs, Smart Lotus Recessed is a popular spot for a minimalistic expression.

Modular - Smart Lotus





The logo for Visionz Architectural Products features the word "VISIONZ" in a large, bold, sans-serif font. Above the letters "I", "O", and "N" is a stylized white leaf or swoosh graphic. Below "VISIONZ" is the text "ARCHITECTURAL PRODUCTS" in a smaller, all-caps, sans-serif font.