



Product Flipbook



CREATED BY LIGHTING DESIGNERS FOR DESIGNERS

Lighting Design Behind Every Fixture

We understand lighting because we've been illuminating exquisite environments for decades. It was a natural evolution for us to create a line of specification grade luminaires with unique built-in features that are superior in design, functionality, and flexibility to other lighting fixtures on the market.

Sustainable Design/Modular Architecture

Our family of LED lighting fixtures, be it recessed or surface mount, are sustainably designed and include CA JA8 Title 24 Compliant lumen and driver packages, multiple beam spreads, 4000K, 3500K, 3000K, and 2700K Static White options, 3000-1800K and 2800-2200K Warm Dim options, and 4700-2200K Tunable White.



PRIVATE RESIDENCE - SAN FRANCISCO, CA
Lighting Design: TDG
Photo: Matthew Millman

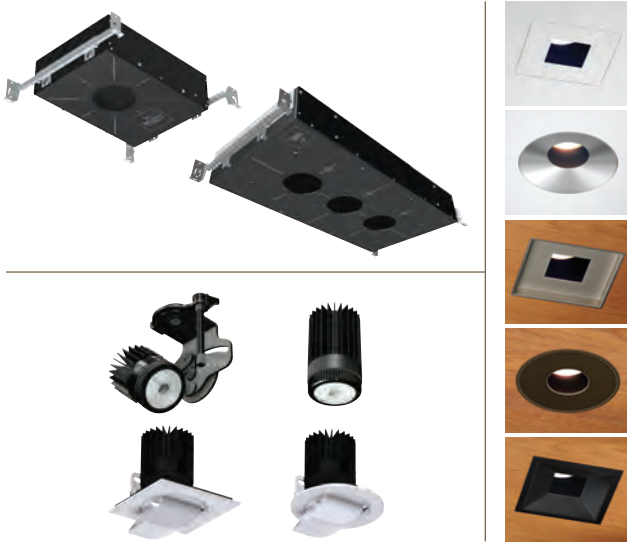


1111 1000
NEXT UP
BUSINESS CLIMATE
AND
NEW BUSINESS

A FAMILY OF LED LIGHTING OPTIONS

800 Series

The 800 Series features optical accessories to facilitate a dazzling design. With 30 beautiful trim styles in five designer finishes, 21 optical beam spread options, and 14 driver options to cover your needs, we offer single-lamp and multiple-lamp fixtures to transform your space into stunning illuminated environments.



400 Series

Need flexibility? We've got you covered! For new construction or remodel applications, the 400 Series is offered in integral or remote driver options with many of the same great features as the 800 Series. This fixture can accommodate up to 5-1/2" thick ceilings, proving there is little the 400 Series can't accomplish.



200/200-HD Series

Continuing our family of high-quality recessed fixtures, the 200 Series shines in its versatile use in new construction or remodel applications for residential, commercial, hospitality, and beyond! This feature-rich fixture offers integral and remote driver options in various emitter configurations and outputs—all at a great value.



MPT2 Series

Our sleek, super adjustable Monopoint fixture is offered in four finishes, four different stem lengths, round or square canopies, and the same beam spread and color temperature options that make our product lines so well-rounded. The Monopoint fixture features integral and remote driver options and creates a lighting solution for even the most challenging environments.





DAVIS ESTATE WINERY - CALISTOGA, CA
Lighting Design: Eric Johnson Associates
Photo: Adrian Gregorutti

HERE FOR YOU TODAY AND TOMORROW

Personalized Customer Service

We know there are many choices when it comes to specified lighting products. In addition to the quality of our fixtures, we provide a high-level of timely support for every one of our products.

We are dedicated to providing the best customer service, technical support, and product knowledge that goes beyond installation. Throughout your project, we strive to earn your business. After all, we want a customer for life.

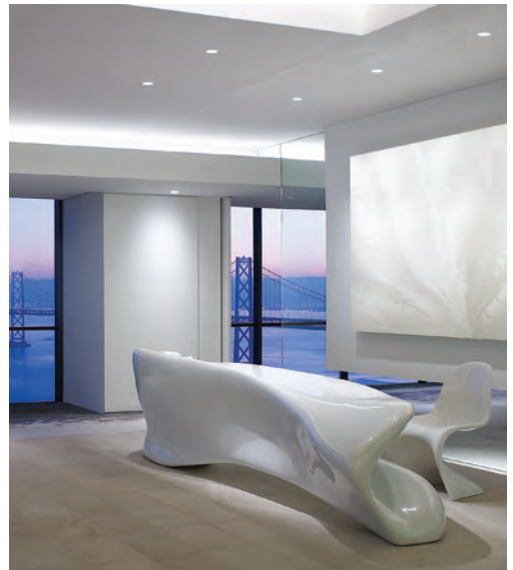
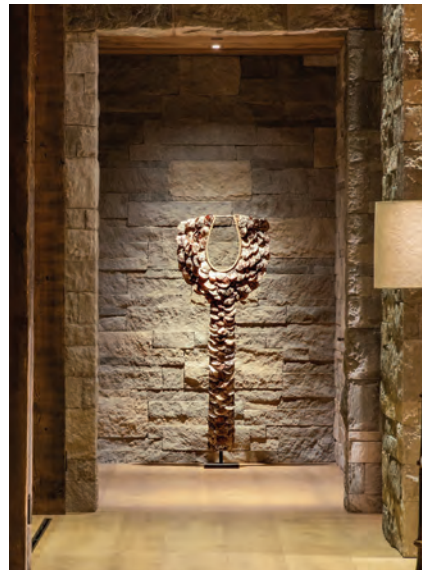




PRIVATE RESIDENCE - SAN FRANCISCO, CA
 Lighting Design: TDG
 Photo: Roger Davis



FRONT COVER:
 SILVER OAK WINERY - HEALDSBURG, CA
 Lighting Design: EJA
 Photo: Patrik Argast



8lighting.com

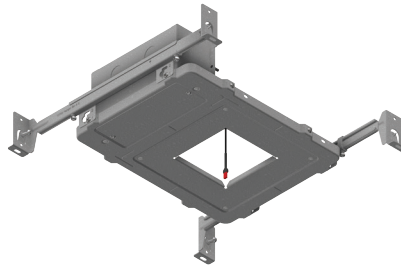
526 PORTAL STREET • COTATI CA 94931 • P 707.794.0888 F 707.795.4379

200 Series – Recessed LED

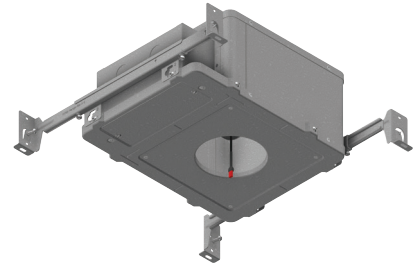
NEW CONSTRUCTION

FEATURES

- Three light engine options: **201** Fixed, **202** Adjustable (0-30° vertical/360° horizontal), and **203** Wall Wash deliver up to 1265 lumens at 14 watts
- Four 92 CRI White LED options: 2700K, 3000K, 3500K, and 4000K
- Two 97 and 95 CRI Warm Dim LED options: 3000-1800K and 2800-2200K
- Four beam spread options: 15°, 25°, 40°, and 60°
- Five beam enhancing lens options
- Nine dimming driver options
- Six Round or Square trim options: 1-7/8" aperture FLAT, 2-1/4" aperture BEVEL, and 2-3/4" angle-cut aperture WALL WASH
- Three trim mounting options: Flanged (for multiple ceiling types), Flangeless for sheetrock, and Flangeless for wood/stone
- Four trim finish options and three trim lens options rated for use in DRY, DAMP, or WET locations and residential steam applications
- Two housing options: Type Non-IC/Airtight and Type IC/Airtight/Chicago Plenum Rated
- 2022 CA JA8 Compliant

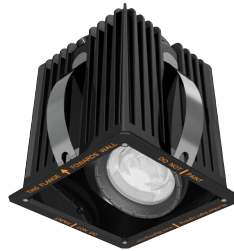


Type Non-IC
(Round or Square)



Type IC/Airtight/Chicago Plenum
Rated
(Round or Square)

201/202/203 – FIXED/ADJUSTABLE/WALL WASH LED



201, 202, and 203 PERFORMANCE SUMMARY

Model:	201-HI	201-WD	202-HI	202-WD	203-HI	203-WD
Delivered Lumens:	827-1265	529-750	785-1232	523-760	939-1059	714-727
Delivered Lumens Per Watt:	59-90	35-50	56-88	35-51	67-76	48

Performance range shown for models 201 and 202 with Square and Round 1-7/8" aperture FLAT and 2-1/4" aperture BEVEL trims, HI 2700-4000K Static White LED, and WD 3000K Warm Dim LED with 15-60° optic. Performance range for shown for model 203 with Square and Round 2-3/4" aperture WALL WASH trim, 2700-4000K 92 CRI LED, and WD 3000K Warm Dim LED with 40° optic.



WHITE

SATIN ALUMINUM

SATIN ALUMINUM w/ WHITE FLANGE

OIL-RUBBED BRONZE



526 Portal Street
Cotati, CA 94931
USA
P 707.794.0888
www.8lighting.com

All No. 8 Lighting fixtures and components are UL Listed to both U.S. and Canadian requirements. No. 8 Lighting trims and lamp modules are protected by one or more U.S. Patents. No. 8 Lighting reserves the right to change details of design, materials, and finish.

© 2023 No. 8 Lighting



09/2023



93001-05

200 Series – Recessed LED

REMODEL

FEATURES

- Three light engine options: **201-RM** Fixed, **202-RM** Adjustable (0-30°vertical/ 360°horizontal), and **203-RM** Wall Wash deliver up to 1265 lumens at 14 watts
- Four 92 CRI White LED options: 2700K, 3000K, 3500K, and 4000K
- Two 97 and 95 CRI Warm Dim LED options: 3000-1800K and 2800-2200K
- Four beam spread options: 15°, 25°, 40°, and 60°
- Five beam enhancing lens options
- Nine Integral and Six Remote dimming driver options
- Six Round or Square trim options: 1-7/8" aperture FLAT, 2-1/4" aperture BEVEL, and 2-3/4" angle-cut aperture WALL WASH
- Two trim mounting options: Flanged (for multiple ceiling types) and Flange-less for sheetrock
- Four trim finish options and three trim lens options rated for use in DRY, DAMP, or WET locations and residential steam applications
- Type Non-IC / Airtight

201/202/203 – FIXED/ADJUSTABLE/WALL WASH LED



201-RM, 202-RM, and 203-RM PERFORMANCE SUMMARY

Model:	201-RM-HI	201-RM-WD	202-RM-HI	202-RM-WD	203-RM-HI	203-RM-WD
Delivered Lumens:	827-1265	529-750	785-1232	523-760	939-1059	714-727
Delivered Lumens Per Watt:	59-90	35-50	56-88	35-51	67-76	48

Performance range shown for models 201-RM and 202-RM with Square and Round 1-7/8" aperture FLAT and 2-1/4" aperture BEVEL trims, HI 2700-4000K Static White LED, and WD 3000K Warm Dim LED with 15-60° optic. Performance range for shown for model 203-RM with Square and Round 2-3/4" aperture WALL WASH trim, 2700-4000K 92 CRI LED, and WD 3000K Warm Dim LED with 40° optic.



WHITE

SATIN ALUMINUM

SATIN ALUMINUM w/ WHITE FLANGE

OIL-RUBBED BRONZE



526 Portal Street
Cotati, CA 94931
USA
P 707.794.0888
www.8lighting.com

All No. 8 Lighting fixtures and components are UL listed to both U.S. and Canadian requirements. No. 8 Lighting trims and lamp modules are protected by one or more U.S. Patents. No. 8 Lighting reserves the right to change details of design, materials, and finish.

© 2023 No. 8 Lighting



09/2023



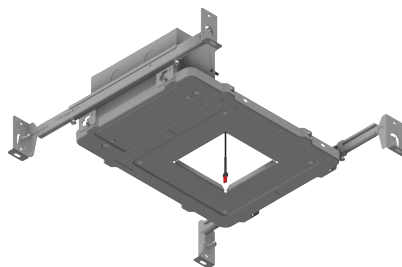
93002-05

200-HD Series – Recessed LED

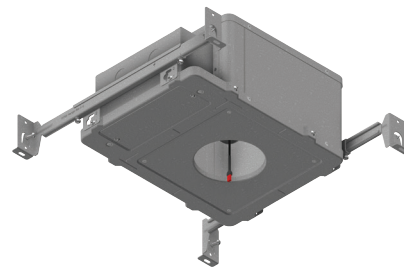
NEW CONSTRUCTION – HOSPITALITY, DESIGN, and COMMERCIAL APPLICATIONS

FEATURES

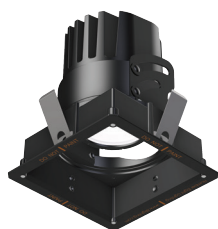
- Fully adjustable (0-30°vertical/ 360°horizontal) for general, accent, and wall wash lighting applications
- Type Non-IC delivers up to 2130 lumens and 83 LPW at 26 watts
- Type IC delivers up to 1751 lumens and 90 LPW at 19.5 watts
- Four 94 CRI White LED options: 2700K, 3000K, 3500K, and 4000K
- Two 97 CRI Warm Dim LED options: 3000-1800K and 2800-2200K
- Four beam spread options: 15°, 25°, 40°, and 60°
- Five beam enhancing lens options
- Eight dimming driver options
- Six Round or Square trim options: 1 - 7/8" aperture FLAT, 2 - 1/4" aperture BEVEL, and 2 - 3/4" angle-cut aperture WALL WASH
- Three trim mounting options: Flanged (for multiple ceiling types), Flangeless for sheetrock, and Flangeless for wood/stone
- Four trim finish and three trim lens options
- 2022 CA JA8 Compliant



Type Non-IC
(Round or Square)



Type IC/Airtight/Chicago Plenum
Rated
(Round or Square)



200-HD-S – ADJUSTABLE LED

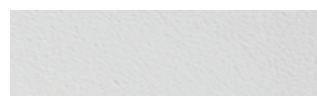


200-HD-R – ADJUSTABLE LED

200-HD-S and 200-HD-R PERFORMANCE SUMMARY

Trim:	FLS-2-BV	FLR-2-BV	FLS-2-WW	FLR-2-WW	FLS-2	FLR-2
Delivered Lumens - Non-IC:	1942-2130	1872-2052	1530-1678	1464-1605	1555-1705	1408-1544
Delivered Lumens - IC:	1597-1751	1557-1707	1251-1372	1192-1307	1265-1387	1155-1266

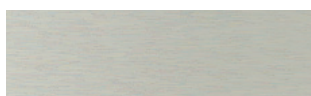
Performance range shown for 2700-4000K 94 CRI LED with 40° or 60° optic. Performance varies for each CCT and beam spread.



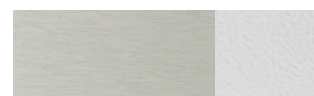
WHITE



OIL-RUBBED BRONZE



SATIN ALUMINUM



SATIN ALUMINUM w/WHITE FLANGE



526 Portal Street
Cotati, CA 94931
USA
P 707.794.0888
www.8lighting.com

All No. 8 Lighting fixtures and components are UL Listed to both U.S. and Canadian requirements. No. 8 Lighting trims and lamp modules are protected by one or more U.S. Patents. No. 8 Lighting reserves the right to change details of design, materials, and finish.

© 2023 No. 8 Lighting



09/2023



93003-05



Number 8 Lighting Product Flipbook

visionz.ca 437-886-9837 projects@visionz.ca

POWERED BY
VISIONZ Digital Version



Downloadable PDF Version can be found on our website.

Has Your Team Gone Digital?
Check out this collection on

 SOURCERY

