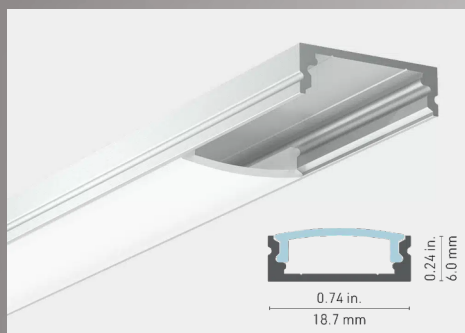




LUMENTM Truss

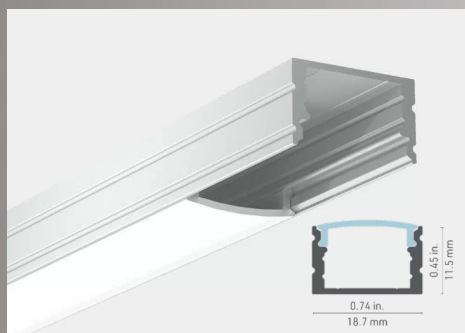
Product Flipbook





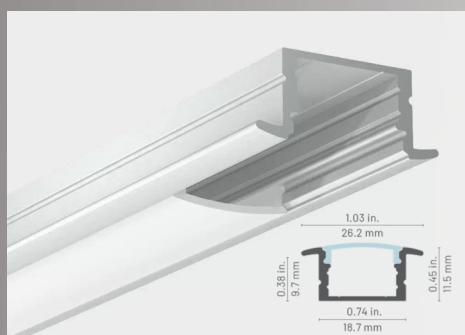
This profile is the thinnest of the 1000 series being only 6mm thick and 18.7mm wide and is compatible with most of our LED strips. Perfect for tight spots, it will be very discreet and will stand out.

1100 Series



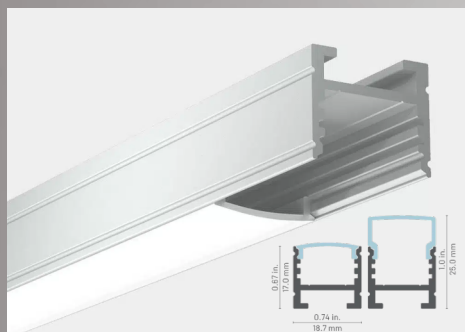
Lighting without hot spots! Here is a profile designed to ensure that the LED source is invisible, offering uniform and soft lighting for the eyes. A compact and versatile luminaire!

1200 Series



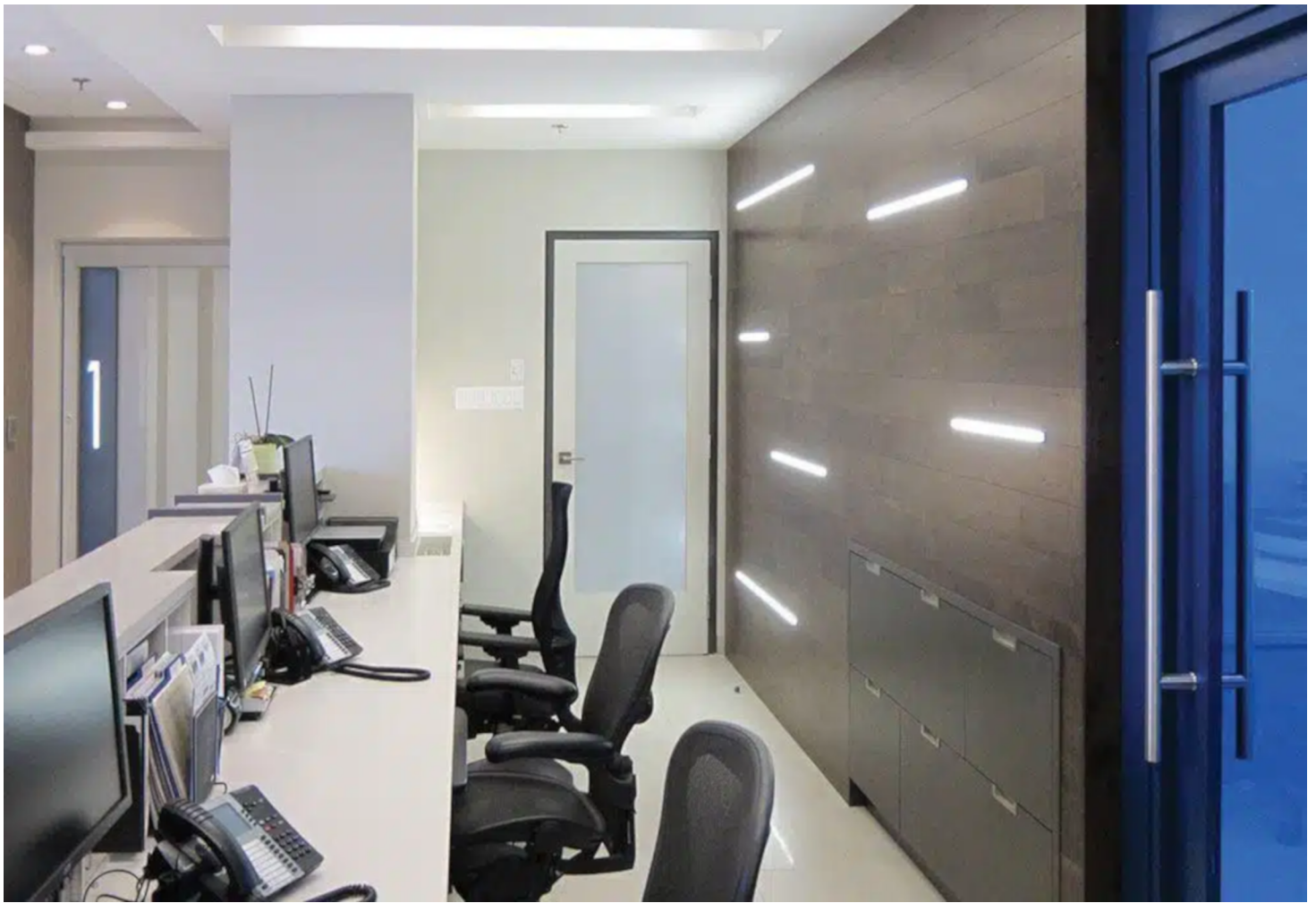
Here is a compact and recessed profile allowing you to make the LED light source invisible. The edges on each side of this extrusion allow for a recessed installation, while having understated style with its discreet and neat appearance.

1300 Series



In addition to offering even lighting, the 1400 allows beam adjustment as well as a considerably larger choice of installation options. This profile also offers a wide variety of installation, from fixed to suspended mounting.

1400 Series



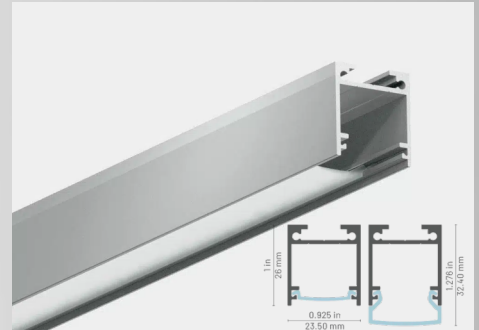


LumenTruss



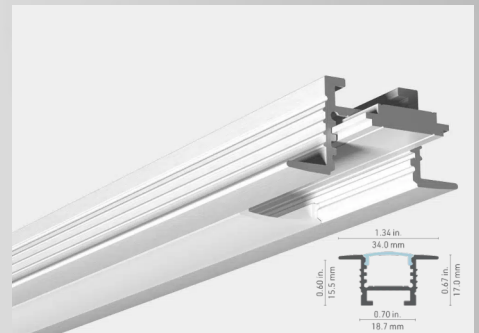
Say hello to versatility version 2.0! This profile is the biggest in size from our 1000 series line of product. With a new sliding lens design, this profile offers a wide variety of installation, from fixed to suspended mounting.

1450 Series



The edge design of the 1500 profile harmonizes with your décor and allows for a very secure recessed installation and provides lighting without hot spots. Use with our spring brackets for a fast and easy installation.

1500 Series



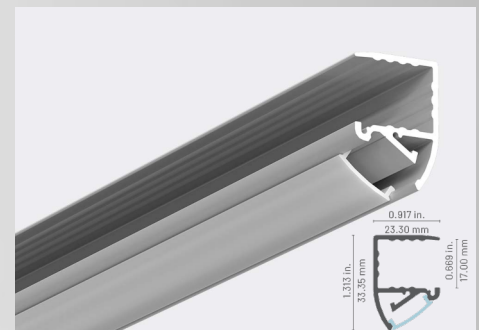
The 1650 profile is your best choice for product display. It offers lighting at a 30-degree angle, so you can cover all of the items on your shelves or racks and bring them centerstage. The smooth curved profile adds an extra accent in style. Use it with a clear lens to maximize the light output, or with an Optiflex or Opal lens for no hot spots from any angle*.

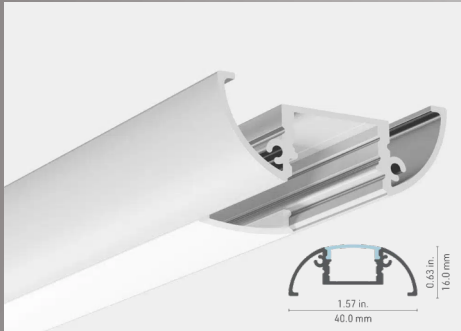
1650 Series



Here is an aluminum LED profile which is installed simply by sliding it over a standard 5/8" shelf. This snap on profile with a variety of lenses results in a very fast and easy installation. Shining light downward at a 35 degree angle, the objects under the shelf are beautifully illuminated.

1680 Series





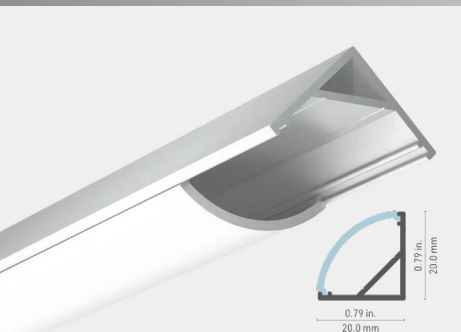
Great for under cabinet lighting. A rounded profile especially designed to conceal mounting hardware and wires, the 1690 can serve well for under cabinet lighting, or on any other surface as a mural fixture.

1690 Series



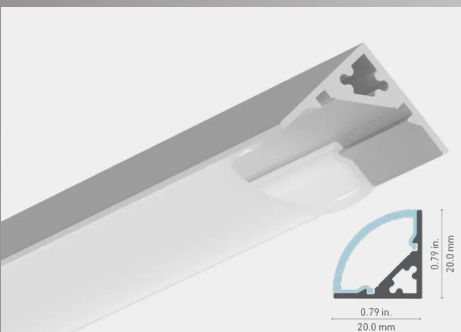
Here is a solution for the easiest bidirectional light washing ever. Whether illuminating art from behind the frame, adding a halo around a panel, lighting a cove or a vanity mirror from the perimeter, the 1800 profile will do a rock-solid job, fine-tuned to your liking, while staying, well, "behind the curtains."

1800 Series



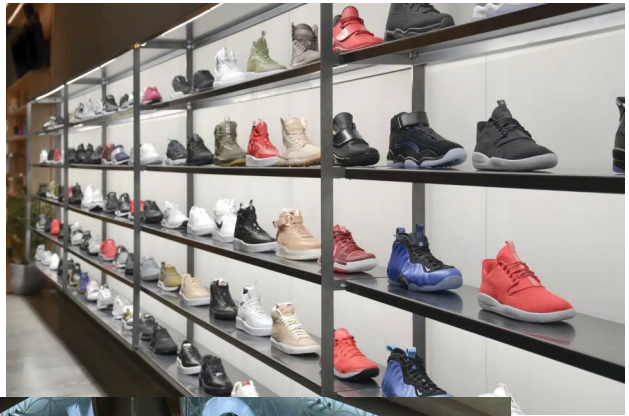
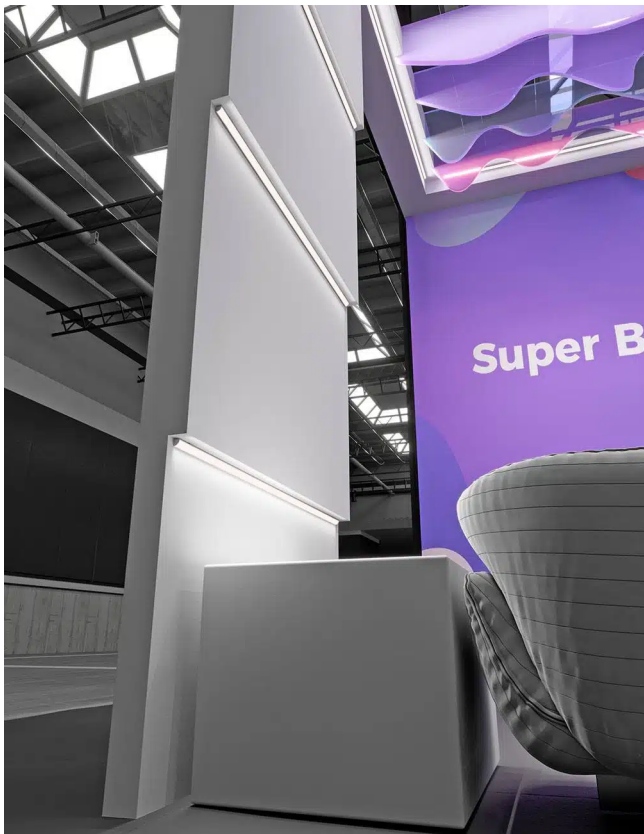
The 2000 is designed to allow extra lighting angles. The profile can be installed to project at 30 or 60 degrees, two angles for lighting extra deep or high scenes, to bring out the finest details, without hot spots.

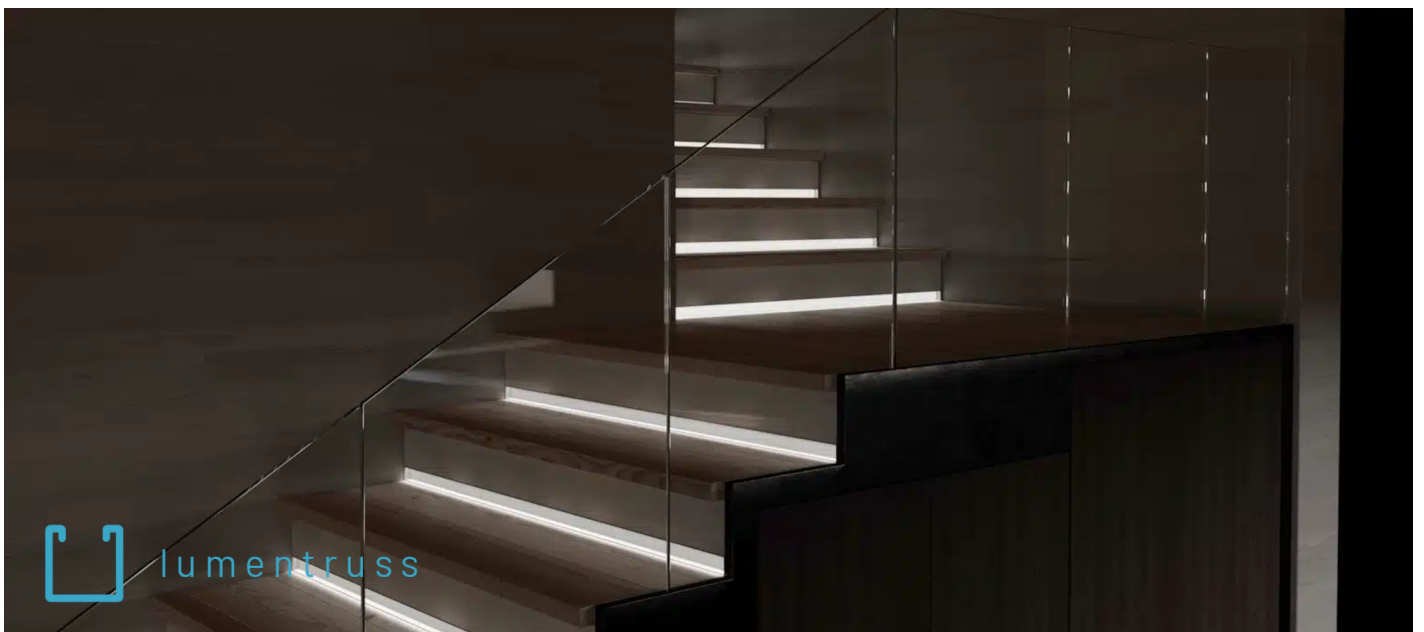
2000 Series



Creating a visual impact has never been easier with our new 2200 profile. Offering lighting without hot spots at a 45-degree angle from a corner, this series excels at maximizing appeal of the products in POP stands while maintaining a minimalist style. This profile includes a long lens fitting system to maximize its long term durability.

2200 Series



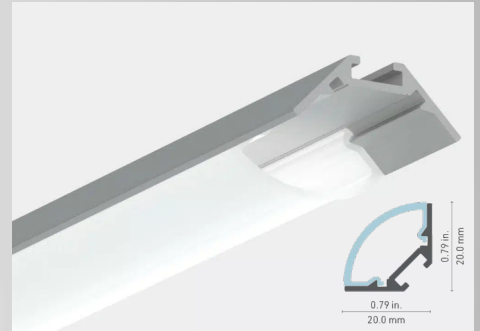


LumenTruss



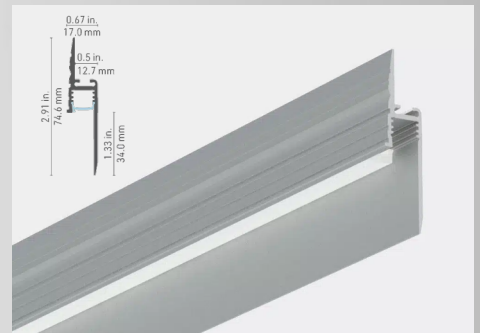
Offering lighting without hot spots at a 45-degree angle from a corner, this series excels at maximizing appeal of the products in POP stands, while maintaining a minimalist style. This profile includes a long lens fitting system to maximize its long term durability.

2400 Series



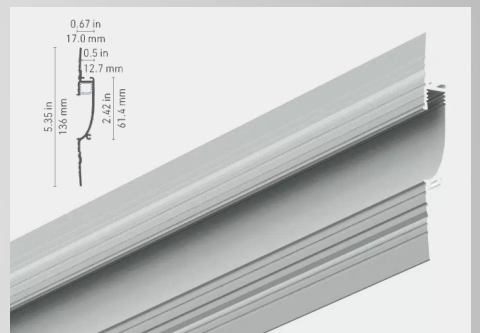
Contour lighting at its best! The ultimate in profiles that disappear completely into the wall surface, the 3150 is designed to provide downward lighting, 90° angle lighting. With a longer inner section than the 3100, this profile provides a greater surface area for light reflection, which optimizes safety applications in areas with poor or deficient lighting.

3150 Series



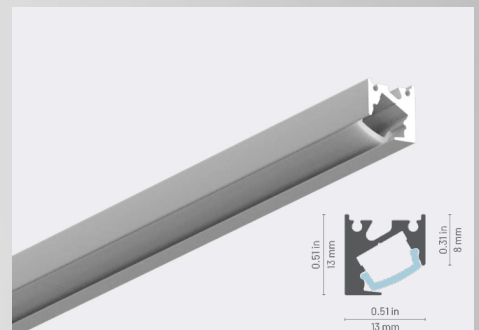
With its smooth and curved inner surface, the new 3200 recessed profile allows indirect lighting with a hollow effect, regardless of the height at which it is installed. What's new? The possibility of adding endcaps for a neat and elegant finish. The 3200 is ideal for residential or commercial applications that require high efficiency, safe lighting.

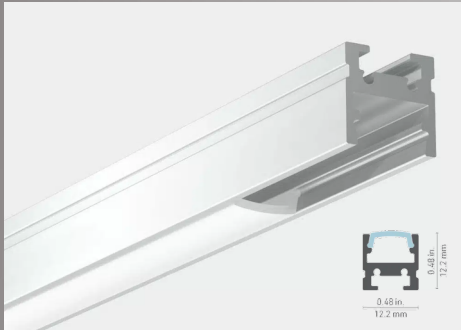
3200 Series



Our range of ultra-compact profiles has been expanded! The 4200 profile provides accent lighting at an angle of 30° to highlight products on shelves or to cut out the underside of cabinets. A notch on the underside completely conceals the TR64 mounting wire, giving the luminaire an even more aesthetic look. Ideal for commercial or residential applications.

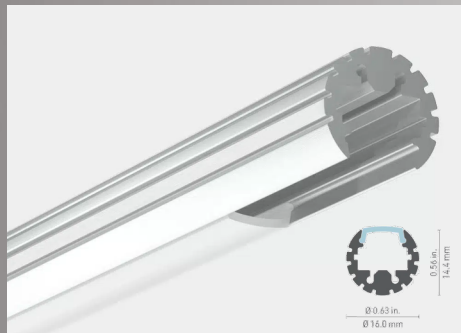
4200 Series





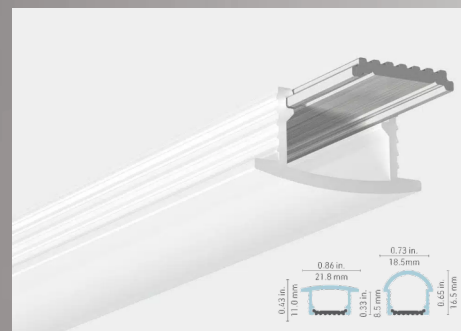
One of the smallest on the market, guaranteed to be discreet! The 4400 profile is reduced to a minimum with its size of less than half an inch, while accepting a good range of LED strips¹.

4400 Series



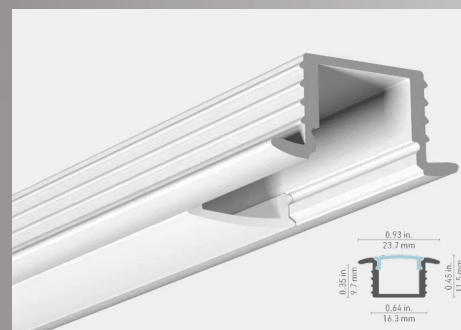
A well cherished secret that we just have to brag about. Meet our magic wand! The 4500 is a slim but extremely versatile display solution. With its ultra-compact size and its complete freedom of lighting direction, and accepting most LED strips (1), you will find many ways to install it with its wide variety of accessories.

4500 Series



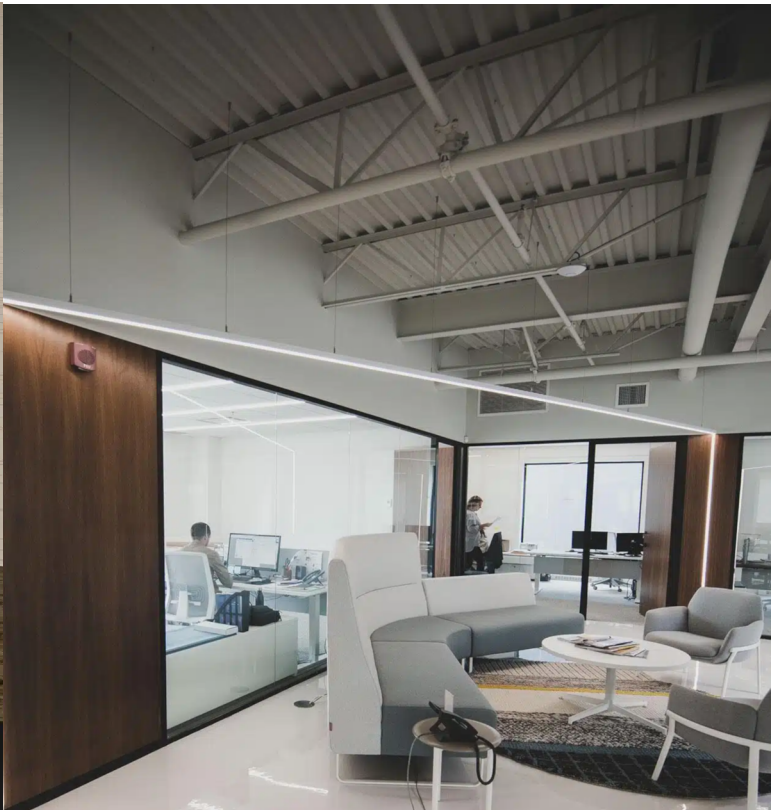
The 5000 consists of an aluminum heatsink base inserted into a flexible recessed lens with gripping sides. It allows for a very simple installation, with the assembly inserted into the recess and staying in place due to the gripping ribbed lens sides. The 5/8" wide and 3/8" deep recess is a direct fit for North American cabinetry, closet, or mural applications, besides being economical and providing lighting without hot spots.

5000 Series



Here is a compact recessed profile allowing you to make the light source and the LED invisible. The edges on each side of this extrusion allow a recessed installation, giving it style with a discreet and neat appearance.

5350 Series



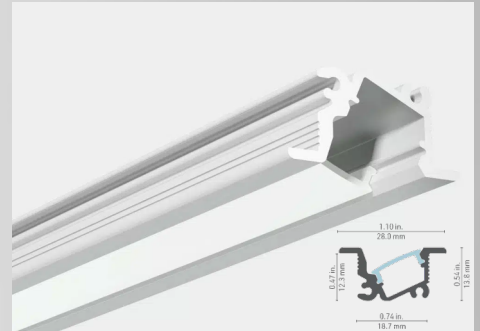


LumenTruss



The 5450 is a compact recessed LED lighting profile for cabinetry and other wood furnishing projects, directing the light beam at a 25-degree angle from the normal, which allows you to light the cabinet contents from the edge.

5450 Series



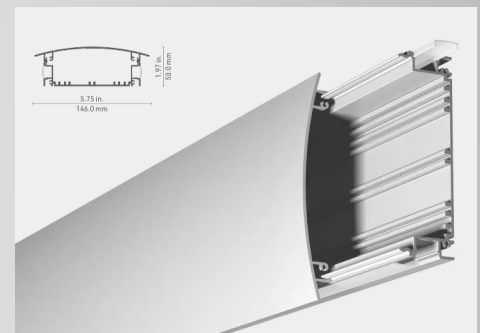
The 5560 profile allows integrating linear LED lighting on curved or uneven surfaces. Its low profile (1/5" including lens), and a thickness of less than 1/32" (0.75mm), allows for effortless bending and installation using plain mounting tape or screws. The opal lens will provide a diffused light effect without harsh dots.

5560 Series



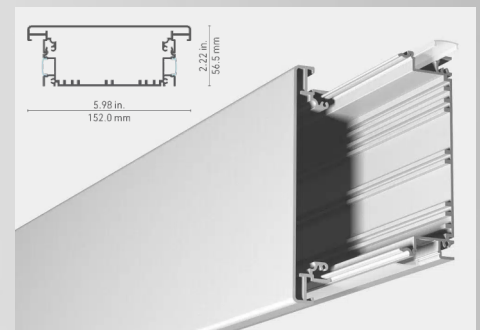
Make customized protuberant wall fixtures with our 7400 profile and the 7420 faceplate. It accepts most LED strips and lenses of the 1000 Series, offering multiple lighting possibilities. Besides lighting the wall up and down, you could vary the light intensity, color, or even create dazzling animated effects. The fixture can house the power supplies and controllers internally. Horizontal or vertical luminaires can be built up to 20 feet long and connected directly onto a conventional electrical junction box.

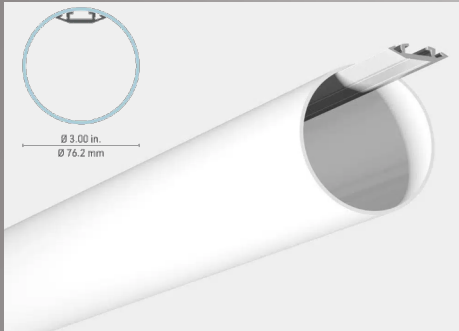
7420 Series



From flat wall fixtures to one-of-a-kind signage, the 7400 profile with the 7450 faceplate can do it all. The 7400 base accepts most LED strips and lenses of the 1000 Series, and can also house the power supplies and lighting effect controllers for all that jazz. The faceplate can be CNC machined and backlit through an acrylic screen for effective designer signage. Go up to 20 feet long, and finish as desired.

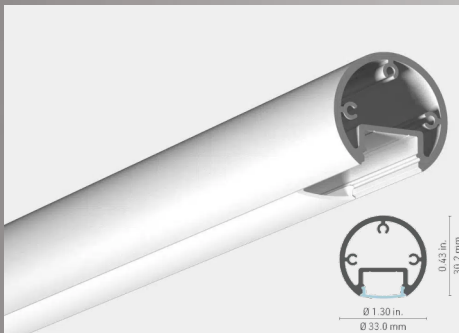
7450 Series





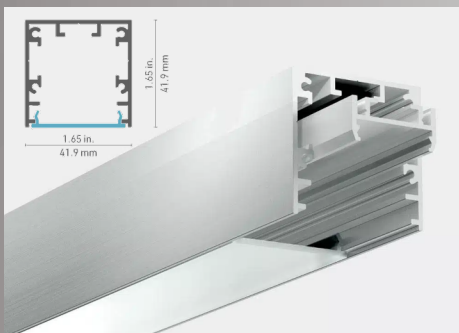
Create beautiful mural or suspended light fixtures using our 3-inch acrylic tubes, to a maximum length of 12 feet. The system offers multiple lighting possibilities as it accepts a wide range of LED strips on the three surfaces of the heatsink insert, allowing you to vary the intensity, distribution, and color of the light. The mural lighting fixture can be installed horizontally or vertically onto a conventional electrical junction box, using a unique canopy that can also host a slim transformer. The large diameter of the opal acrylic tube provides a dot-free light appearance.

7650 Series



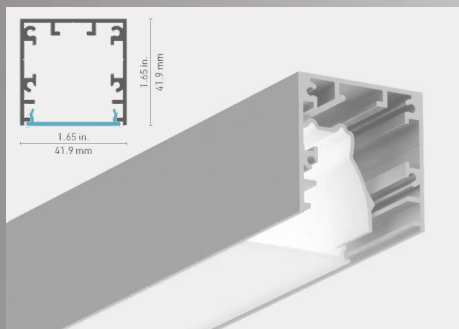
The 7850 is a direct replacement of standard closet rods, and even curtain rods. Whether you need to light your way through the morning wardrobe, or turn your sheer curtains into a privacy screen at night, this profile will do the job. It can be finished in abrasion resistant 3M DI-NOC film to match any interior.

7850 Series



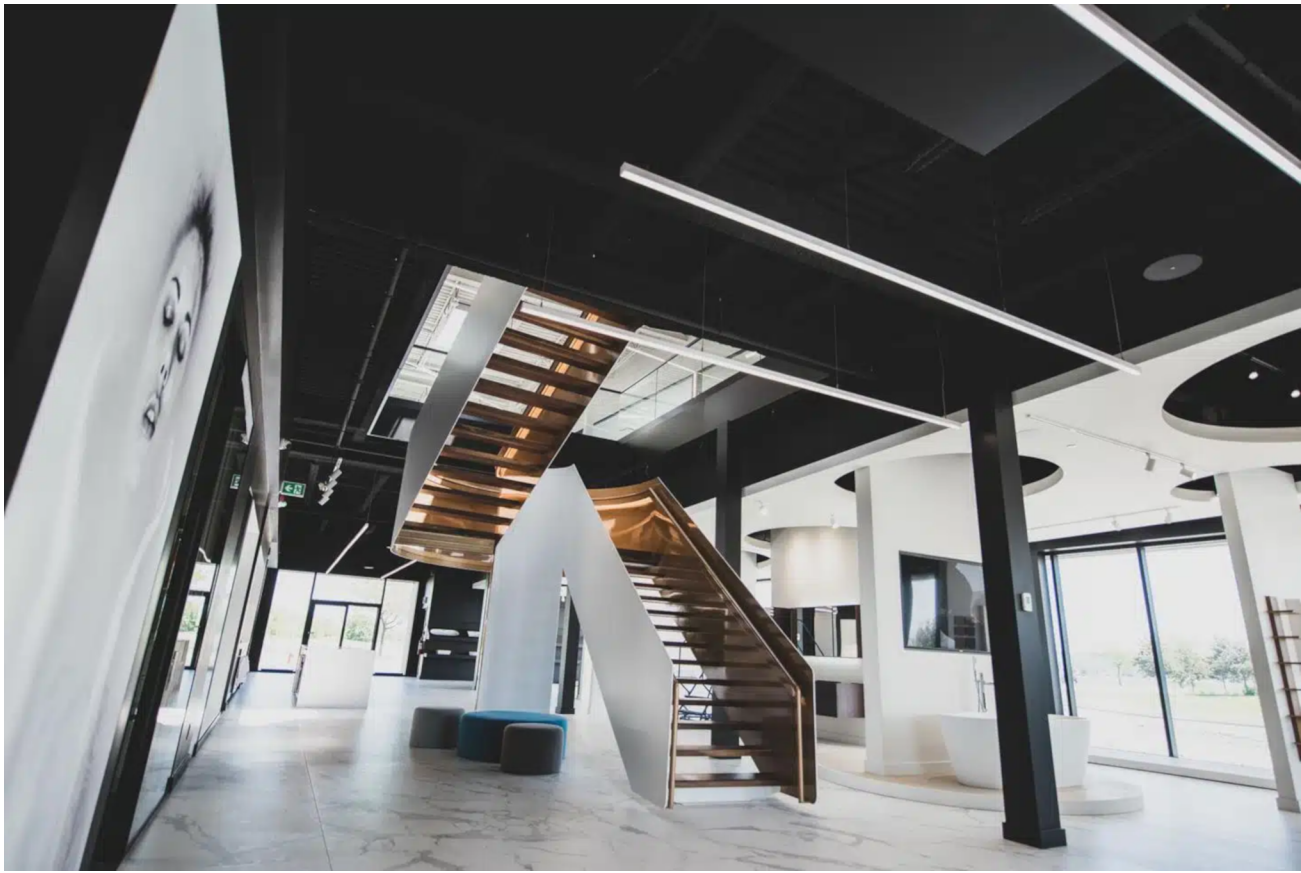
This new profile design will offer you a wide choice of optics, thanks to the development of various lens that will allow you to customize the light projection angle. In addition, its unique hardware will allow you to adjust the direction of your fixture to your needs, even after installation is complete.

8800 Series



Looking for a long infinite line of light? This new profile was designed exactly for that. Combined with our LuxLine driverless technology, you can imagine ambitious designs without complicating installation. In addition, its unique hardware will allow you to adjust the orientation of your light according to your needs, even once the installation is completed.

8800 LuxLine Series



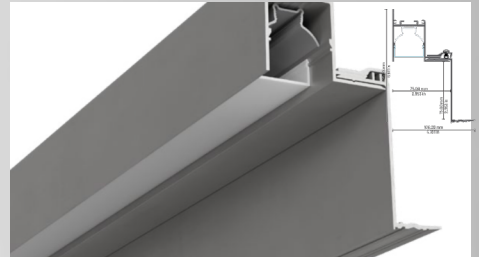


LumenTruss



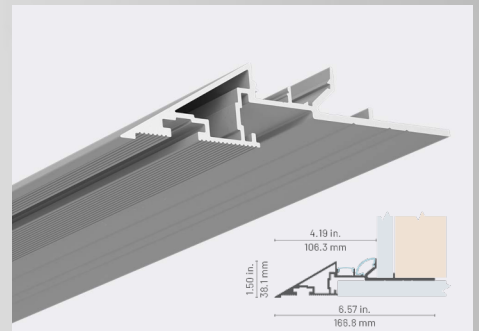
The 8560 linear profile is a two-piece mud in aluminum channel designed to create an illuminated cove that disappears into the ceiling structure. It is integrated with our HER reflector that holds the Luxline line voltage 120V LED strip tape in place, maximizes luminance, and minimizes light leaks. The profile is ideal for large scale commercial architectural lighting applications.

8560 Series



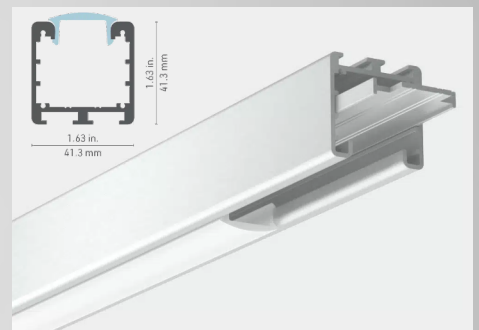
The 8920 "Knife Edge" profile is designed for cove lighting. The aluminum channel directly fits standard gypsum panels for a seamless finish and to simplify the construction of cove lighting. Two integrated LED channels add contour lighting upward and outward to beautifully fill the space with light. Build rectangular or square coves to your measurements using the pre-built corners and straight extrusions. Customize the light with the various LED lighting options and even have the ability to program scenes when integrated with a Casambi controller.

8920 Series



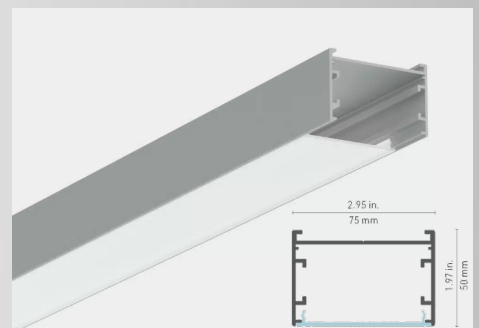
The 9400 profile has twin mounting channels, for a wide range of installation options. Whether on swivel arms, on a surface, or suspended, it can be built in complex spatial configurations using corner joiners. Its rugged build in 6063-T5 aluminum alloy will withstand abuse in demanding applications and extreme weather, all of it with an understated elegance.

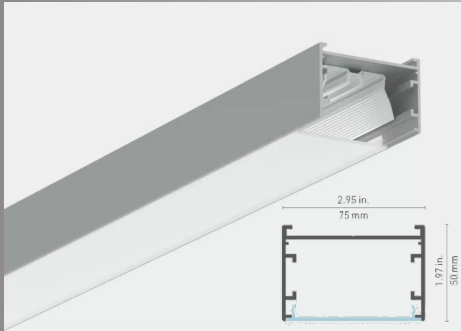
9400 Series



The 9820 is a 9000 series system designed for those looking for a minimalist effect. Its ultra-slim profile combined with our advanced LED technology make it a suitable solution to accentuate the geometric shapes of stairs, hallways, kitchen islands and much more.

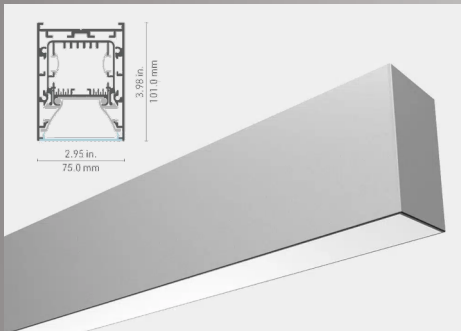
9820 Series





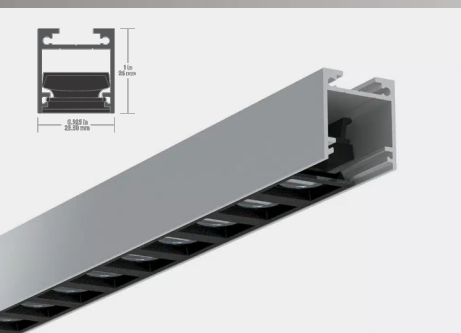
The 9820 is a 9000 series system designed for those looking for a minimalist effect. Its ultra-slim profile combined with our advanced LED technology make it a suitable solution to accentuate the geometric shapes of stairs, hallways, kitchen islands and much more.

9820 Luxline Series



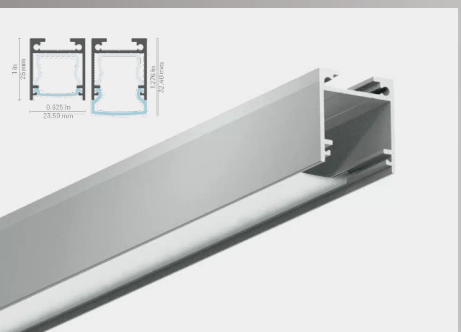
The 9850 Profile is a 9000 series linear luminaire system designed to be suspended. With its minimalistic style, it is robust and powerful. Multiple standard LED light engines can be installed up to 36 mm wide for maximum power. It is equipped with an Optiflex (frosted) lens that scatters light evenly, dot-free, in a 120-degree beam. Easy installation for a finish without visible screws: an exclusive feature of LumenTruss™!

9850 Series



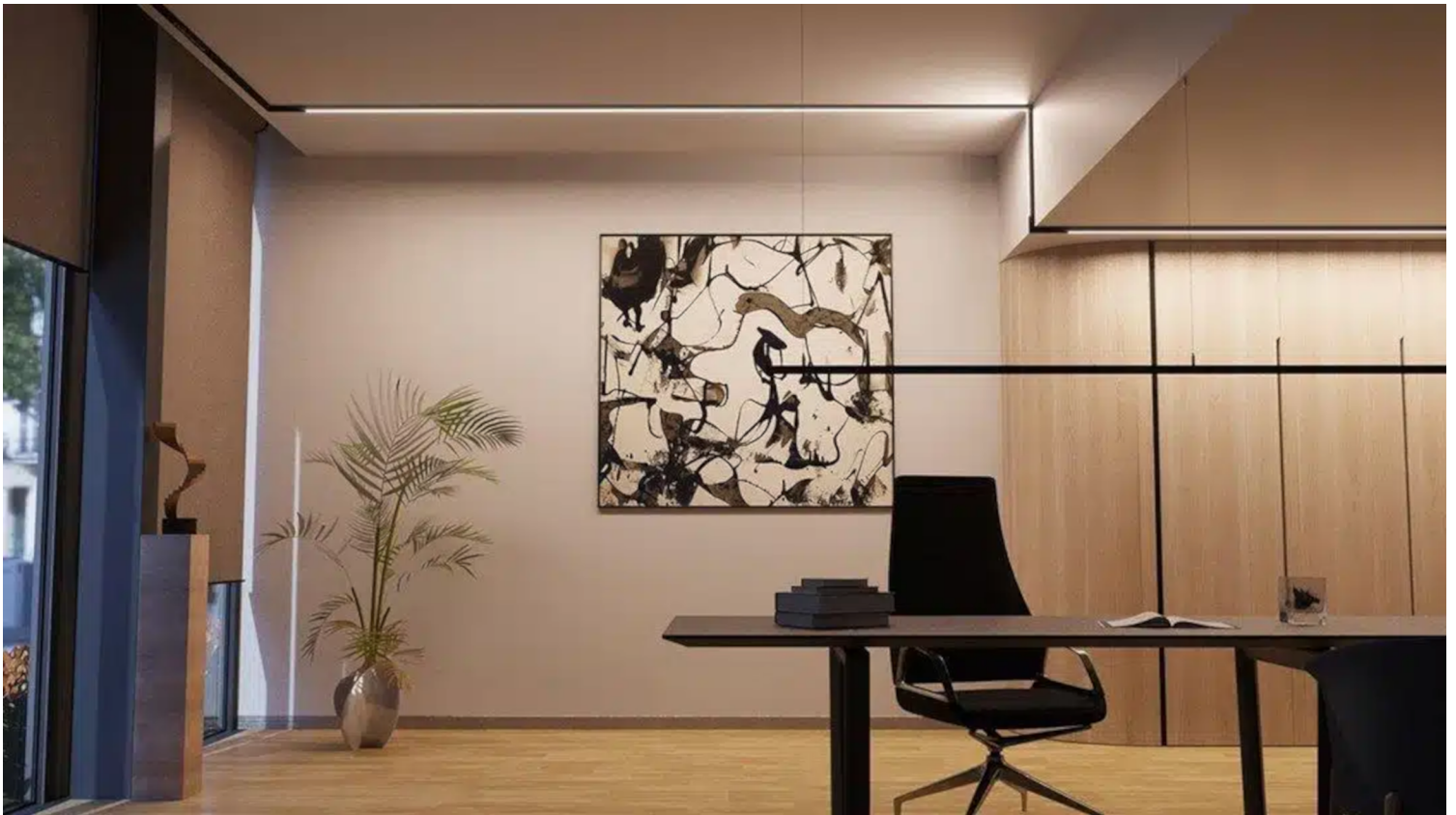
The 1450 Optilux luminaire gives you full control whether you want to focus lighting on work surfaces or achieve indirect lighting with a wallwashing effect. With its customized options, you have carte blanche: choice of beam angles for uniform or asymmetrical lighting, and a collection of trendy colors with the elegant aluminum finish. Designed for indoor use with multiple installations, it is ideal for office, boutique and hotel applications or to enhance wall lighting.

1450 Optilux Series



Say hello to versatility version 2.0! This profile is the biggest in size from our 1000 series line of product. It has been specially designed for outdoor use and used with our new LuxLine series of 120V led strip tapes and can house all the different IP68 lumen Packages we offer. With a new sliding lens design, this profile offers a wide variety of installation, from fixed to suspended mounting.

1450 LuxLine Series





LumenTruss - Pro Series



A high-tech gem: What makes the 1580 Optilux Pro Profile so innovative? Its lens incorporates an LED light source with a CRI of 95+, allowing you to direct the light exactly where you want it with exceptional quality and color rendition. Even better, its anti-reflective technology offers unparalleled visual comfort. Another innovation exclusive to LumenTrussTM!

1580 Pro Series



The 1590 Optilux Pro offers a direct and powerful light allowing you to focus the light wherever you want it. It can be focused on a work surface, to enhance textures or to achieve an indirect lighting with a wall-washing effect. The LED finish is available in a choice of three colors : black, white or gold. Designed for indoor use, it's ideal for the office, in a store or to enhance wall lighting. The 1590 is always built-in to provide you an efficient and effective light source.

1590 Pro Series



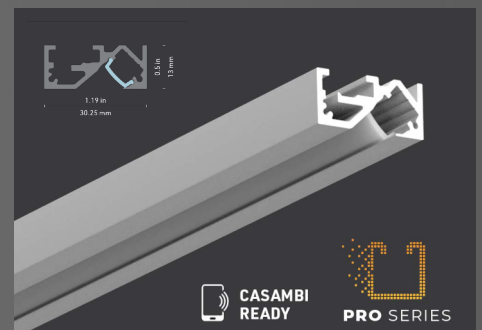
A new compact profile has been added to this thin series! Profile 4250 provides accent lighting at an angle of 53° to highlight products on shelves or to cut out the underside of cabinets. Even better, the phantom brackets perfectly conceal the surface installation. Ideal for commercial or residential applications.

4250 Pro Series

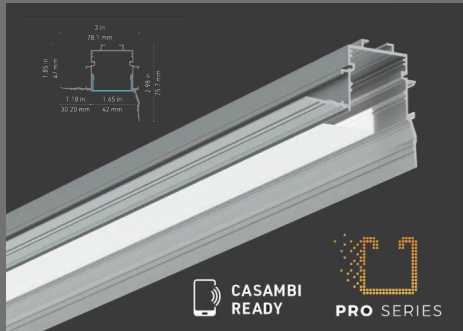


A new compact profile has been added to this thin series! Profile 4260 provides accent lighting at an angle of 53° to highlight products on shelves or to cut out the underside of cabinets. Even better, the phantom brackets perfectly conceal the surface installation. Ideal for commercial or residential applications.

4260 Pro Series

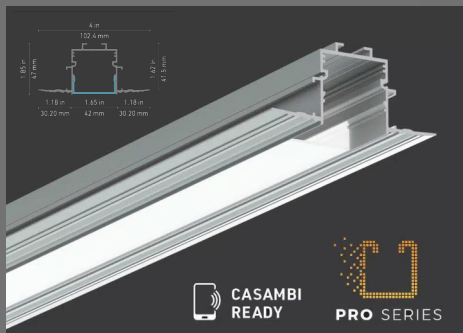


LumenTruss - Pro Series



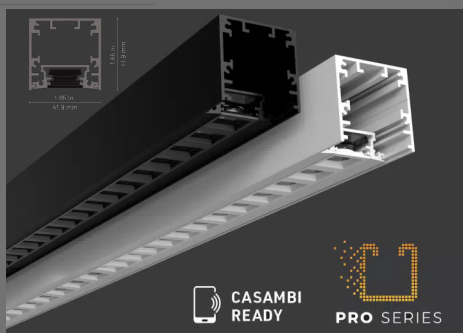
The 8540 Pro profile is designed to disappear into the structure, merging the light source with the surface. Its 90° edge on one side makes it ideal for contour lighting application. Very versatile with 15 LED light sources to choose from 2400 K to 6200 K including WarmDim, Tunable White, RGB and RGB white. Its refined look harmonizes perfectly with any project.

8540 Pro/Pro LuxLine Series



The 8550 Pro profile is designed to disappear into the structure, merging the light source with the surface. Very versatile with 15 LED light sources to choose from 2400 K to 6200 K including WarmDim, Tunable White, RGB and RGB white. Its refined look harmonizes perfectly with any project.

8540 Pro/Pro LuxLine Series



This profile combines the unique installation capabilities of our 8800 with the quiet power of our Optilux. Point the light in the direction you want it to go, even after installation, and focus the light in the way that suits you.

8800 Optilux Series



The 8870 Pro profile is designed to disappear into the structure so that the light source merges with the surface. The LED trays are perfectly smooth and allow the installation of two strip tapes (5.9 W/ft) side by side for maximum lighting power, or face to face for optimal light diffusion. A new feature: it can be used with all type B joiners to build a solid structure, and it fits directly with standard gypsum panels for an impeccable finish. Its refined look harmonizes perfectly with any design.

8870 Pro Series





LumenTruss - Pro Series



The 9820 is a 9000 series system designed for those looking for a minimalist effect. Its ultra-slim profile combined with our advanced LED technology make it a suitable solution to accentuate the geometric shapes of stairs, hallways, kitchen islands and much more.

9820 Pro Series





LumenTruss Product Flipbook

visionz.ca 437-886-9837 projects@visionz.ca

POWERED BY
VISIONZ Digital Version



Downloadable PDF Version can be found on our website.

Has Your Team Gone Digital?
Check out this collection on

 SOURCERY

