



EKLIPSE

ARCHITECTURAL LIGHTING

Product Flipbook

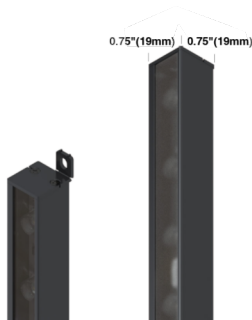




Horizon Mini

Linear Lighting

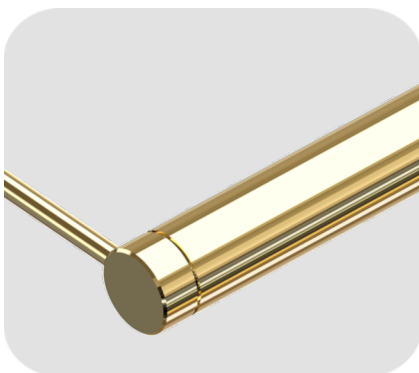
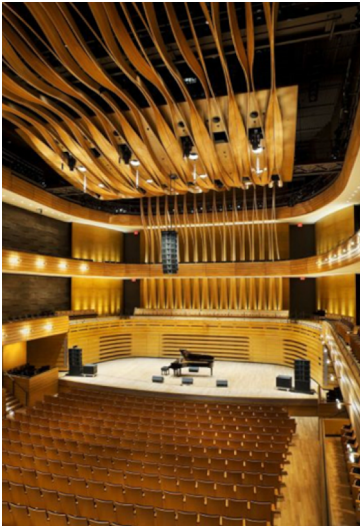
Variable and flexible, HORIZON can be used to reinterpret its environment with surface grazing on textured walls or edge lighting in vitrine setup.



Horizon

Linear Lighting

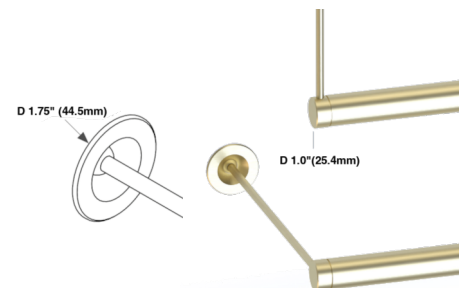
HORIZON offers a wide range of optics, reaching up to 20 feet long throw with narrow optics, to provide incomparable control of light. HORIZON flexibility of installation with multiple mounting options available makes it a perfect answer to the specific needs of commercial, institutional and private spaces.

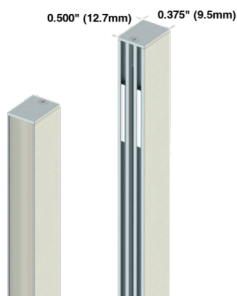


StreamLine

Linear Light

STREAMLINE offers a Wide range of optics to provide incomparable control of light, reaching up to 20 feet long throw with narrow optics, perfect for wall-washing large canvas, and available in 2 dedicated light distributions to meet your specific needs.

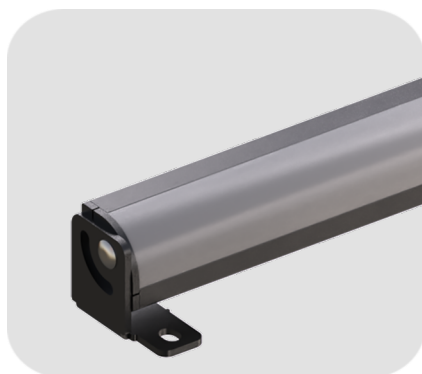
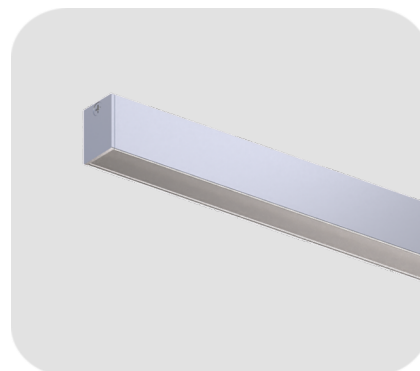




Nixe

Linear Light

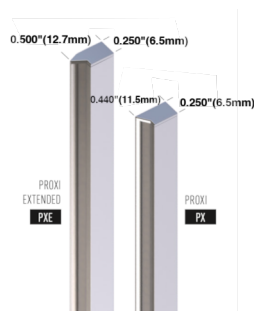
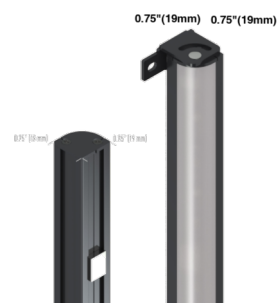
Specially studied and developed, its linear optics create pixel-free light source, giving constant and uniform luminance. Despite this technical challenge, NIXE still perfectly controls its light distribution.



Flow Cove

Cove Light

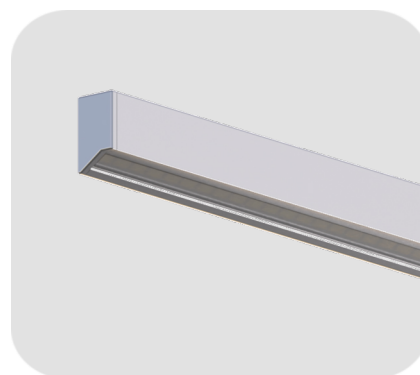
The FLOW COVE, specifically designed for cove lighting, is available in flex model to fit curved walls with an array of mounting options for ease of installation/use.



Proxi

Linear Light

PROXI was designed to offer outstanding light performance and distribution in an almost invisible millwork detail.



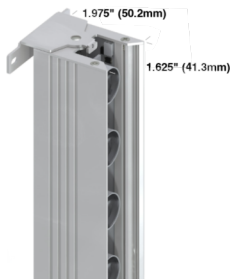


Horizon Contour

Adjustable Linear Lighting

HORIZON CONTOUR is specifically design for precision lighting by allowing tilt and curve adjustment, optimizing the light produced into every unique installation environment.

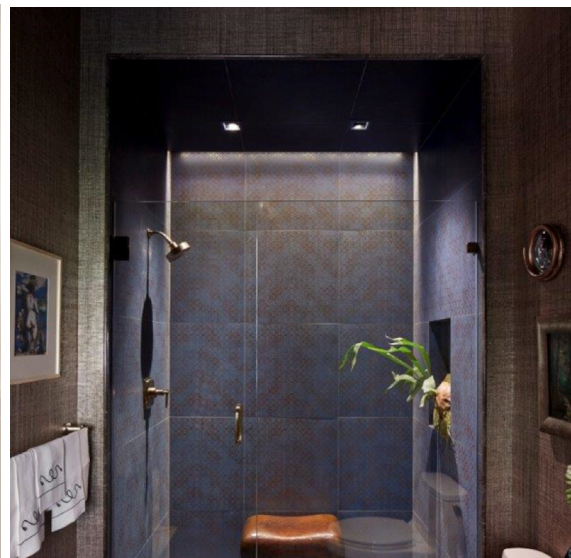
1.125" (28mm) | 1.125" (28mm)

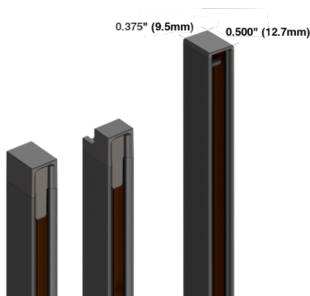


Edge

Adjustable Linear Lighting

EDGE is an adjustable linear luminaire primarily used for vaulted surfaces. Its distinctive pivoting mechanism was developed to improve lighting control in atypical environments.

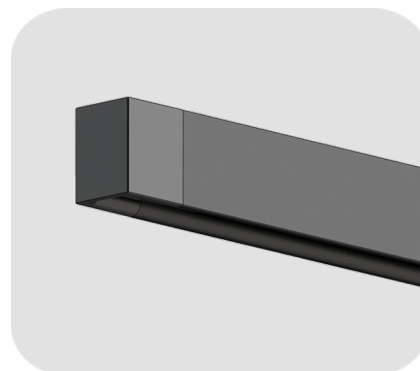




Lifeline Surface

Track

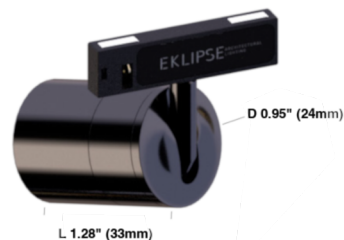
LIFELINE SURFACE is a refined and minimalist track lighting system that can accommodate three luminaires specially designed for it, PIXIS, PIXIS FIVE and MILI. LIFELINE SURFACE track system encompasses near invisible integration, ingenious connectivity and a simplified installation.



Pixis Lifeline

Track SpotLight

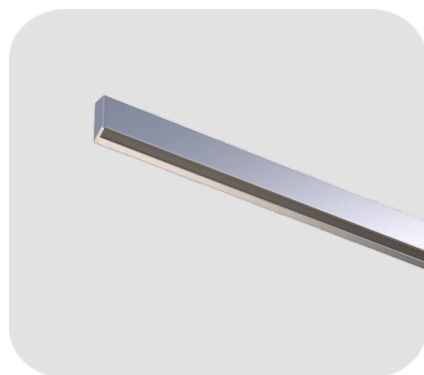
PIXIS™ LIFELINE model for track lighting, demonstrates once again its great versatility and easy-to-use features. Compact in design but big in light, it provides precise focus illumination in many merchandising applications.



Pixis Five Lifeline

Track SpotLight

PROXI was designed to offer outstanding light performance and distribution in an almost invisible millwork detail.



Pixis Lifeline

Linear Track Light

PIXIS™ LIFELINE model for track lighting, demonstrates once again its great versatility and easy-to-use features. Compact in design but big in light, it provides precise focus illumination in many merchandising applications.

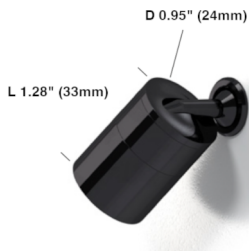




Pixis Stem

Mini Spot LED

PIXIS™ STEM version for small retail showcase is designed to provide focus illumination in many merchandising applications. Compact in design but big in light it's ideal for application requiring small yet precise lighting solution.



Pixis Hydra

Mini Spot LED

PIXIS™ HYDRA model for retail showcase display up to 90 inches (2286 mm) high with up to 5 heads and is designed to allow you to create and recreate your staging in one quick and easy gesture.

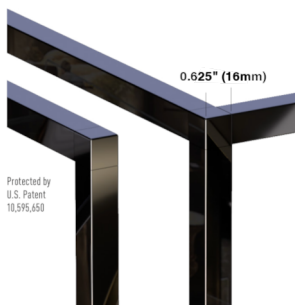


Pixis Plug And Play

Mini Spot LED

PIXIS™ PLUG AND PLAY model is designed to allow you to reshape your setting with ease.. The head can be detached from its electrical receptacle allowing you to reconfigure your environment in any way you want as often as you need.

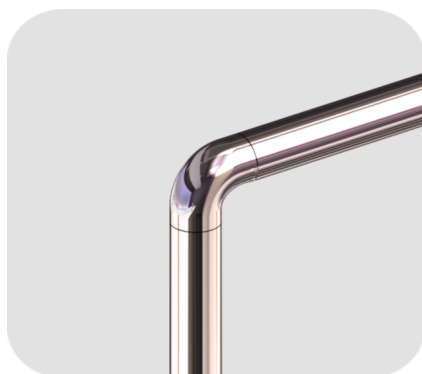




Adena Square

Light Bridge

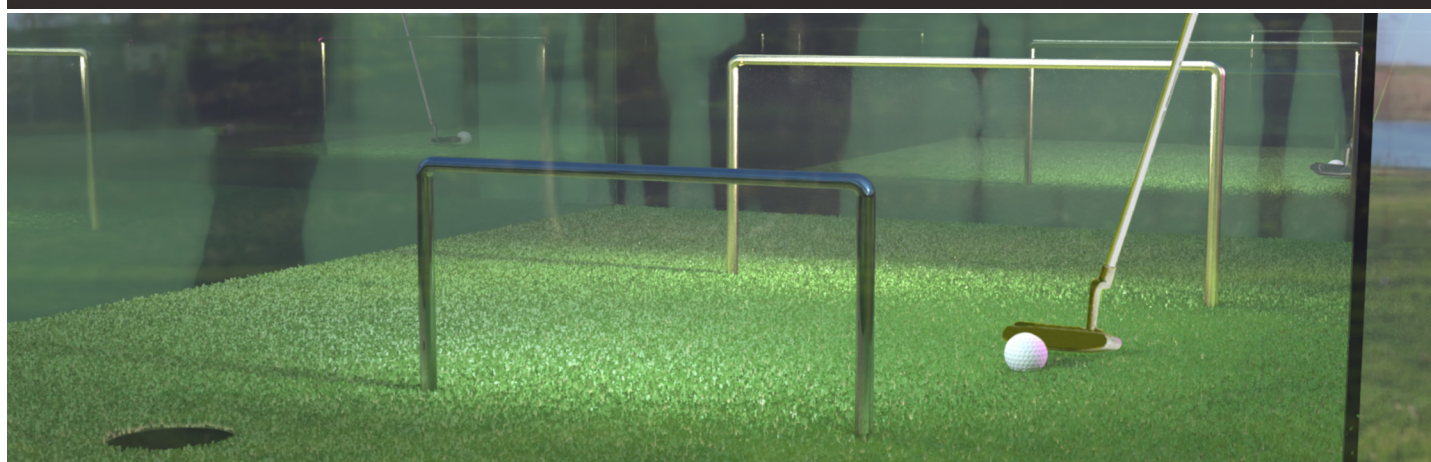
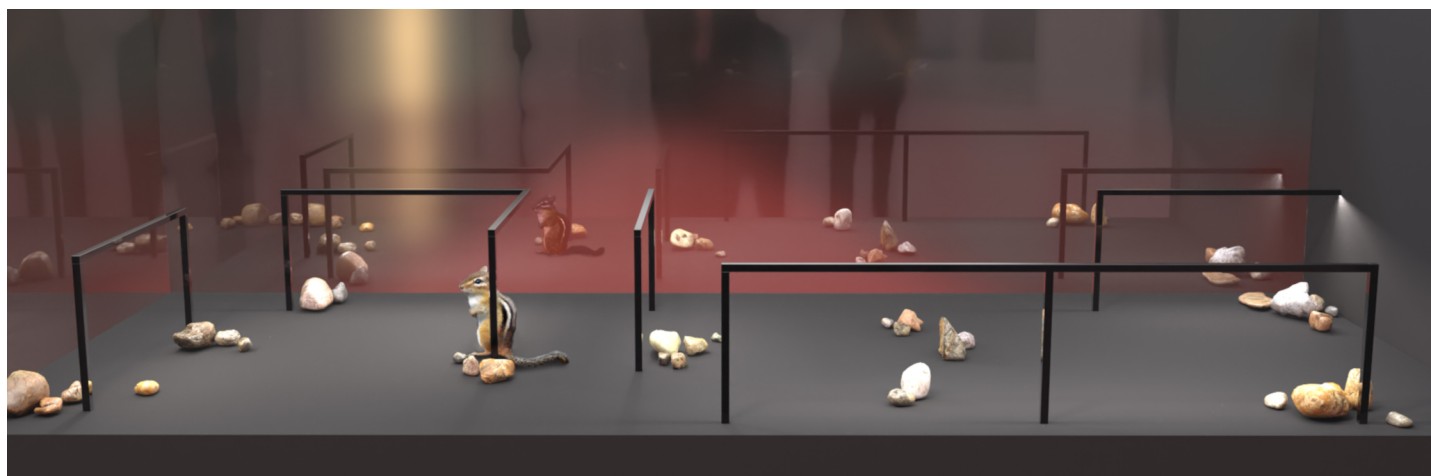
ADENA SQUARE™ focused point sources significantly enhances sparkle on faceted surfaces, making jewelry come alive, thereby captivating its audience.



Adena Round

Light Bridge

ADENA ROUND™ Distinct configuration significantly enhances sparkle on faceted surfaces, thereby captivating its audience. High-Resolution configuration provides incomparable space-volume uniform light coverage.

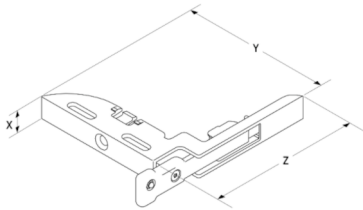
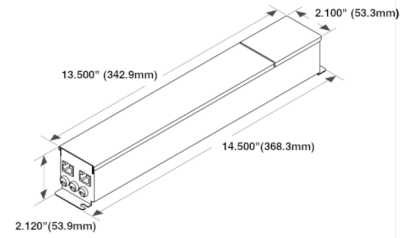




Light Manager

Driver

The LIGHT MANAGER is a remotely-operated, premium, advanced power supply for architectural LED lighting systems with unique features. It is available in two constant voltage models: 24V.100W and 12V. 60W with native 0-10V dimming to 1% and OFF with options to support DALI and Lutron's Ecosystem.



X = 0.38" (9.7 mm)
Y = 2.54" (64.5 mm)
Z = 2.54" (64.5 mm)

Link

Adjustable Shelving

LINK is designed to be flexible during insertion in the LIFELINE. It automatically adjusts to fit. Bring light in the shelving system without using any wire. Universal polarity makes easy to integrate the system.



Link Adjustable Shelving Install







EKLIPSE



Eclipse Lighting Product Flipbook

visionz.ca 437-886-9837 projects@visionz.ca